

NET-EC

Network Managed Video System Controller

The LEIGHTRONIX NET-EC™ is the versatile solution for automated video equipment control including video/audio switching. Unlike the other NET-Series controllers from LEIGHTRONIX, the NET-EC does not include an internal switcher. Rather, the NET-EC is a controller only designed

to interface with an external video/audio switching matrix. The NET-EC excels in applications requiring specialized signal switching requirements, or where a routing switcher is already in place. The NET-EC features PRO-BUS™ machine control for basic DVD and videocassette control functions (PLAY, STOP, REWIND, and RECORD), plus two DVply™ control ports which support random DVD title:chapter access.



NETWORK/INTERNET READY

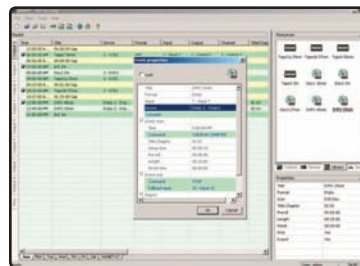
The NET-EC is equipped with an integrated 10/100BASE-T Ethernet port. Occupying a single static TCP/IP address, the NET-EC is accessible anywhere your network extends, even via the Internet. Multiple user profiles, including individual user passwords and privileges, ensures broad access while providing a high level of security. User rights include immediate device control and switching, systems status monitoring, and schedule manipulation and activation.

STAND-ALONE OPERATION

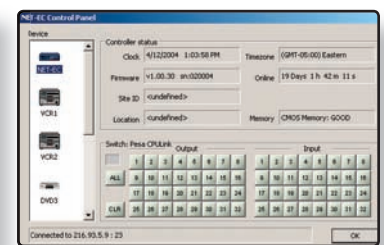
The NET-EC is designed for stand-alone operation. Although a network connection is required for programming and managing the NET-EC, the NET-EC does not require a computer connection for normal operation. The NET-EC executes events synchronized to a high-accuracy internal clock. Event schedules are created on a local or remote PC and are uploaded and stored in non-volatile memory within the NET-EC. A comprehensive system log is also maintained in memory and may be retrieved remotely for verification and diagnostic purposes.

WinNET NETWORK MANAGEMENT SOFTWARE

Each NET-EC includes a copy of LEIGHTRONIX WinNET™ management software. WinNET provides a friendly, yet powerful, user interface for managing one or more MINI-T-NETS™, NET-ECs, or NET-164s™ in any combination, over a standard TCP/IP network connection. Once loaded on a computer workstation, WinNET accesses the NET-EC via the local or wide-area network, giving you the control over your automation system where you need it.



Event Scheduling



System Control Panel

Affordable ♦ Versatile ♦ Reliable
Cable/Broadcast Automation

LEIGHTRONIX, INC.
CONTROL PRODUCTS

EVENT SCHEDULING

Creating powerful schedules is easy with WinNET's drag and drop scheduling interface. Simply click on a program, drag it to the schedule, and drop it! WinNET handles anything from simple event actions to complex playback schedules. Inclusive event scheduling allows definite and straightforward device and switching control on a weekly or date specific basis. WinNET also offers a comprehensive DVD and videocassette resource library. Once a resource is entered into the database, scheduling program playback is as easy as dragging and dropping the resource into a day/time playback sequence. The schedule editor manages all system resources including devices, channels, and programs. Conflicts are easily identified by the system, preventing overlapping of program, device or channel usage. A powerful export function combined with logging make reporting a snap.

PRO-BUS MACHINE CONTROL

The NET-EC utilizes LEIGHTRONIX PRO-BUS interfaces for control of as many as eight digital or analog video playback/recording devices. PRO-BUS interfaces are available to control popular DVD players/recorders, videocassette recorders/players, and GPI-controlled devices. The PRO-BUS allows any combination of devices to be controlled, including infrared, wired, parallel, and serial remotes. Standard PRO-BUS control commands include PLAY, STOP, REWIND, and RECORD.

CONTROL FOR EXTERNAL ROUTING SWITCHERS

The NET-EC is equipped with an RS-232 routing switcher control interface which can be configured to control select video/audio switching equipment. The switcher control port connects directly to an external matrix providing control and status for configurations up to 32 inputs by 32 outputs (32x32). User defined input/output naming ensure easy identification of input and outputs. Up to Eight levels of all-level switching is supported. Please see the routing switcher support page for more information.

DVply DIGITAL VIDEO PLAYER CONTROL

DVply™ is a new LEIGHTRONIX control feature exclusive to the NET-EC, NET-164™, and the NEXUS™. DVply was designed to provide full random access to DVD title and chapter markers when connected to select commercial grade single disc DVD players. Supported functions include PLAY, STOP, and PLAY TITLE:CHAPTER. No external interface is required. The dual RS-232 control ports are factory configured for immediate connection direct to a DVD player.



NET-EC Rear Panel

FEATURES

Programmable Event Controller

- ❖ Multi-Event Programmable Database
- ❖ Stand-Alone Operation
- ❖ Internal High-Accuracy Clock
- ❖ Non-volatile, Battery-Backed Event and System Data
- ❖ Comprehensive System Diagnostics
- ❖ System Log

Front Panel Configuration and Control

- ❖ Set Network IP Address, Subnet, Gateway
- ❖ Force Immediate Event
- ❖ Activate/Deactivate Schedule

Local and Remote PC Access

- ❖ Local and Remote Access via TCP/IP Network
- ❖ Integrated 10/100 Ethernet Port

WinNET Network-Management Software Included

- ❖ Off-Line Event Scheduling
 - Media Resource Library
 - Drag and Drop Event Scheduling
 - Error/Conflict Reporting for Resources and Channels
- ❖ On-Line System Monitoring/Updating
 - Send and Activate Event Schedules
 - Retrieve System Logs
- ❖ System Control Panel
 - Immediate DVD Player/VCR Control
 - Switcher Control and Status

PRO-BUS Machine Control

- ❖ Control for 16 DVD Players and/or VCRs
- ❖ Four-Function Control (PLAY, STOP, REWIND, and RECORD)
- ❖ Individual or Combined Addressing for Group Control
- ❖ Interface Types
 - Infrared (Adhesive Ring)
 - Wired (Mini-Plug and RCA-Plug)
 - Parallel (Multi-Pin)
 - Serial (RS-422)

Two DVply Digital Video Player Control Ports


- ❖ Control for Tascam® DV-D6500 Single Disc Commercial/Professional DVD Players
- ❖ Full Function Control with Random Disc Access (TITLE:CHAPTER)
- ❖ Direct RS-232 Connection, External Interface not Required

Control for External Switchers

- ❖ Controls External Video/Audio Routing Matrices from Select Manufacturers
- ❖ Supports 32x32 Input/Output Matrix up to Eight Levels
- ❖ All-Level Switching—Audio/Data Levels Follow Video
- ❖ User Defined Input/Output Aliases

Five-Year Warranty

SPECIFICATIONS

- ❖ Power—12VDC regulated input with locking coaxial power connector, external AC power adapter accepts 100 to 240VAC 50-60Hz, AC power consumption 6 watts @ 120VAC
- ❖ Network—Eight-position/eight-conductor RJ-45 modular jack, 10/100BASE-T Ethernet, TCP/IP, user-configurable IP address, subnet, gateway
- ❖ Serial—COM1 DB9M RS-232 switcher control port, two DVply DB9M RS-232 device control ports
- ❖ PRO-BUS—One six-position/six-conductor modular jack, LEIGHTRONIX proprietary interface control bus
- ❖ Internal Clock—Battery-backed time and date, crystal oscillator for high accuracy, less than .2 second/day maximum drift
- ❖ Dimensions—One standard 19" rack unit with overall dimensions of 1.75"H x 19.00"W x 7.50"D
- ❖ Weight—3 lbs.
- ❖ Certifications/Compliance—UL 1419 2nd Ed., CSA22.2 NO. 1-98, FCC Part 15 Class A 

APPLICATIONS

Automated Program Broadcasting

Locally Originated Cable Television Channels

- ❖ Public Access
- ❖ Educational Access
- ❖ Government Access
- ❖ Leased Access

Private In-House Networks

- ❖ Hospitals
- ❖ Campus Movie Channels
- ❖ Hotel/Motel/Resort Channels
- ❖ Corporate Communications

Broadcast

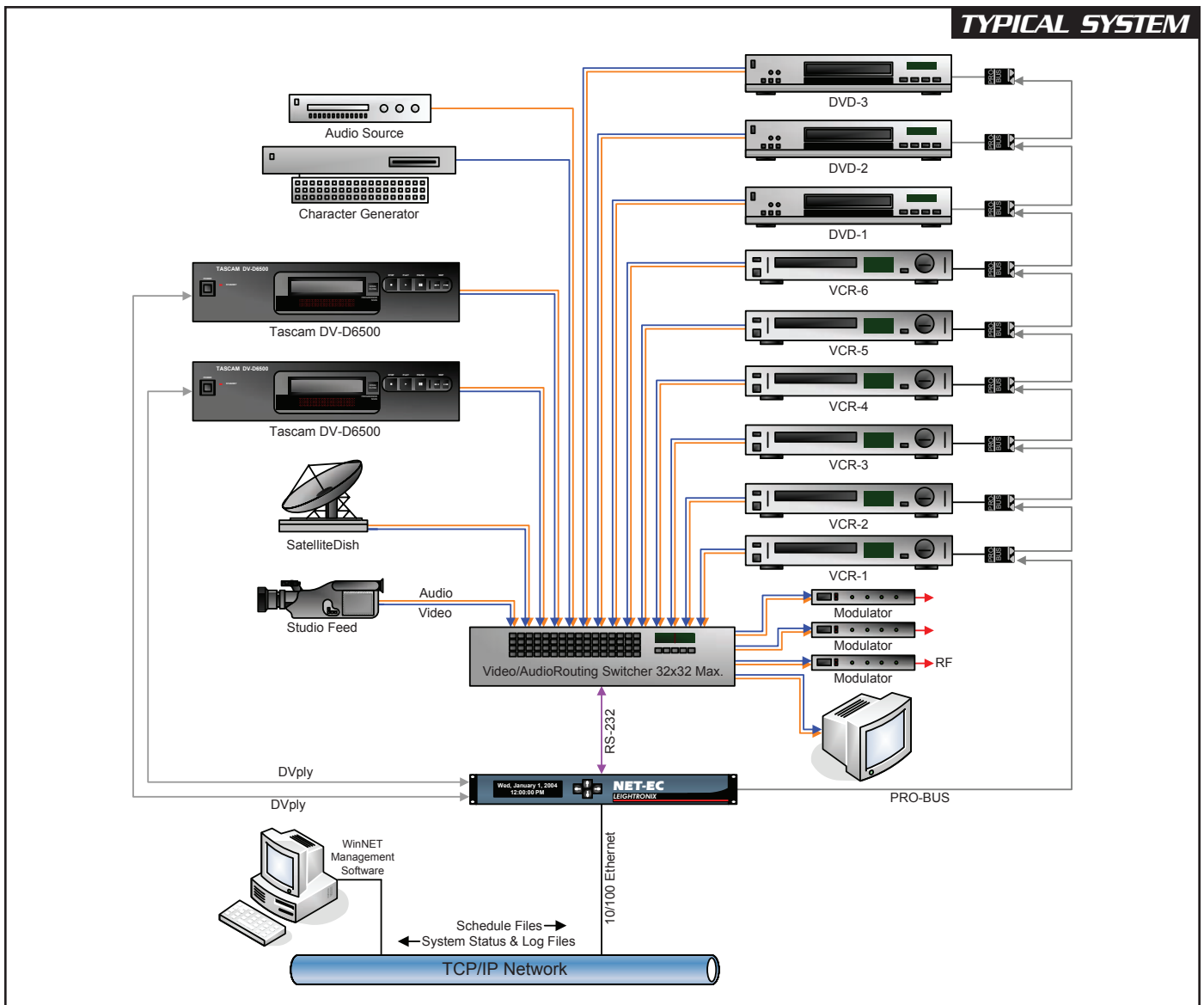
- ❖ LPTV
- ❖ MATV

Timed-Event Switching

- ❖ Syndex Switching
- ❖ Channel Wild-Card Switching
- ❖ Channel Sharing

Unattended Program Recording

- ❖ Satellite/Network Recording
- ❖ Playback Verification/Archiving



info@leightronix.com ♦ www.leightronix.com ♦ (800) 243-5589

2330 Jarco Drive Holt, MI 48842 ♦ Phone (517) 694-8000 ♦ Fax (517) 694-1600