

# MINI-T-NET

## Network Managed Video System Controller/Switcher

The LEIGHTRONIX MINI-T-NET™ is the solution for low-cost, automated video/audio playback, recording, and switching. Representing the third generation of LEIGHTRONIX MINI-T Event Controllers, the MINI-T-NET continues the tradition of providing versatile, reliable, and powerful control at a sensible price. Standard features include LEIGHTRONIX PRO-BUS™ device control, internal video/audio switching, true stand-alone operation, the convenience of network manageability, and a full five-year warranty.



### NETWORK/INTERNET READY

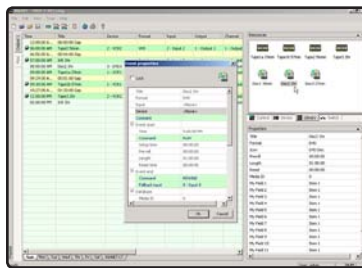
The MINI-T-NET is equipped with an integrated 10/100BASE-T Ethernet port. Occupying a single static TCP/IP address, the MINI-T-NET is accessible anywhere your network extends, even via the Internet. Multiple user profiles, including individual user passwords and privileges, ensures broad access while providing a high level of security. User rights include immediate device control and switching, systems status monitoring, and schedule manipulation and activation.

### STAND-ALONE OPERATION

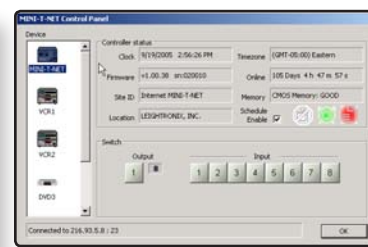
The MINI-T-NET is designed for stand-alone operation. Although a network connection is required for programming and managing the MINI-NET, the MINI-T-NET does not require a computer connection for normal operation. The MINI-T-NET executes events synchronized to a high-accuracy internal clock. Event schedules are created on a local or remote PC and are uploaded and stored in non-volatile memory within the MINI-T-NET. A comprehensive system log is also maintained in memory and may be retrieved remotely for verification and diagnostic purposes.

### WinNET NETWORK MANAGEMENT SOFTWARE

Each MINI-T-NET includes a copy of LEIGHTRONIX WinNET™ management software. WinNET provides a friendly, yet powerful, user interface for managing one or more MINI-T-NETs, NET-ECs™, or NET-164s™ in any combination, over a standard TCP/IP network connection. Once loaded on a computer workstation, WinNET accesses the MINI-T-NET via the local or wide-area network, giving you the control over your automation system where you need it.



Event Scheduling



System Control Panel

Affordable ♦ Versatile ♦ Reliable

**Cable/Broadcast Automation**

**LEIGHTRONIX, INC.**

CONTROL PRODUCTS

## EVENT SCHEDULING

Creating powerful schedules is easy with WinNET's drag and drop scheduling interface. Simply click on a program, drag it to the schedule, and drop it! WinNET handles anything from simple event actions to complex playback schedules. Inclusive event scheduling allows definite and straightforward device and switching control on a weekly or date-specific basis. WinNET also offers a comprehensive DVD and videocassette resource library. Once a resource is entered into the database, scheduling program playback is as easy as dragging and dropping the resource into a day/time playback sequence. The schedule editor manages all system resources including devices, channels, and programs. Conflicts are easily identified by the system, preventing overlapping of program, device or channel usage. A powerful export function combined with logging make reporting a snap.

## PRO-BUS MACHINE CONTROL

The MINI-T-NET utilizes LEIGHTRONIX PRO-BUS interfaces for control of as many as eight digital or analog video playback/recording devices. PRO-BUS interfaces are available to control popular DVD players/recorders, videocassette recorders/players, and GPI-controlled devices. The PRO-BUS allows any combination of devices to be controlled, including infrared, wired, parallel, and serial remotes. Standard PRO-BUS control commands include PLAY, STOP, REWIND, and RECORD.

## INTERNAL SWITCHING

The MINI-T-NET features a built-in 8 x 1, passive video/audio switcher. The internal switcher can be controlled manually through the front panel, remotely using the WinNET software control panel, or through preprogrammed events. Video input/output connectors are BNC type accepting composite NTSC video signals. Audio input/output connectors are RCA (phono) accepting unbalanced monaural audio signals. Loss-of-video detection is also featured with automatic fallback to the default video/audio input number eight if the current input video is lost.



MINI-T-NET Rear Panel

## FEATURES

### *Programmable Event Controller*

- ❖ Multi-Event Programmable Database
- ❖ Stand-Alone Operation
- ❖ Internal High-Accuracy Clock
- ❖ Non-volatile, Battery-Backed Event and System Data
- ❖ Comprehensive System Diagnostics
- ❖ System Log

### *Front Panel Configuration and Control*

- ❖ Set Network IP Address, Subnet, Gateway
- ❖ Force Immediate DVD, VCR, or Switching Function
- ❖ Activate/Deactivate Schedule

### *Local and Remote PC Access*

- ❖ Local and Remote Access via TCP/IP Network
- ❖ Integrated 10/100 Ethernet Port

### *WinNET Network Management Software Included*

- ❖ Off-Line Event Scheduling
  - Media Resource Library
  - Drag and Drop Event Scheduling
  - Error/Conflict Reporting for Resources and Channels
- ❖ On-Line System Monitoring/Updating
  - Send and Activate Event Schedules
  - Retrieve System Logs
- ❖ System Control Panel
  - Immediate DVD Player/VCR Control
  - Switcher Control and Status

### *PRO-BUS Machine Control*


- ❖ Control for 8 DVD Players and/or VCRs
- ❖ Four-Function Control (PLAY, STOP, REWIND, and RECORD)
- ❖ Individual or Combined Addressing for Group Control
- ❖ Interface Types
  - Infrared (Adhesive Ring)
  - Wired (Mini-Plug and RCA-Plug)
  - Parallel (Multi-Pin)
  - Serial (RS-422)

### *Internal Switching*

- ❖ 8x1 Internal Video/Audio Switcher
- ❖ Audio Follows Video
- ❖ Professional BNC Video and RCA Audio Connections
- ❖ Automatic Loss-of-Video Detection with Fallback to Input Eight
- ❖ User Defined Input/Output Aliases

### *Five-Year Warranty*

## SPECIFICATIONS

- ❖ Power—12VDC regulated input with locking coaxial power connector, external AC power adapter accepts 100 to 240VAC 50-60Hz, AC power consumption 6 watts @ 120VAC
- ❖ Network—Eight-position/eight-conductor RJ-45 modular jack, 10/100BASE-T Ethernet, TCP/IP, user-configurable IP address, subnet, gateway
- ❖ Serial—COM1 DB9M RS-232 host port
- ❖ PRO-BUS—One six-position/six-conductor modular jack, LEIGHTRONIX proprietary interface control bus
- ❖ Video—Eight BNC video inputs, one BNC video output, NTSC composite video 1V P-P, passive
- ❖ Audio—Eight RCA audio inputs, one RCA audio output, -10dBV unbalanced line level, passive
- ❖ Internal Clock—Battery-backed time and date, crystal oscillator for high accuracy, less than .2 seconds/day maximum drift
- ❖ Dimensions—2.75"H x 8.25"W x 6.50"D, with optional 2RU rack mount kit [MTRACK](#)
- ❖ Weight—2 lbs.
- ❖ Certifications/Compliance—UL 1419 2nd Ed., CSA22.2 NO. 1-98, FCC Part 15 Class A 

## APPLICATIONS

### Automated Program Broadcasting

#### Locally Originated Cable Television Channels

- ❖ Public Access
- ❖ Educational Access
- ❖ Government Access
- ❖ Leased Access

#### Private In-House Networks

- ❖ Hospitals
- ❖ Campus Movie Channels
- ❖ Hotel/Motel/Resort Channels
- ❖ Corporate Communications

#### Broadcast

- ❖ LPTV
- ❖ MATV

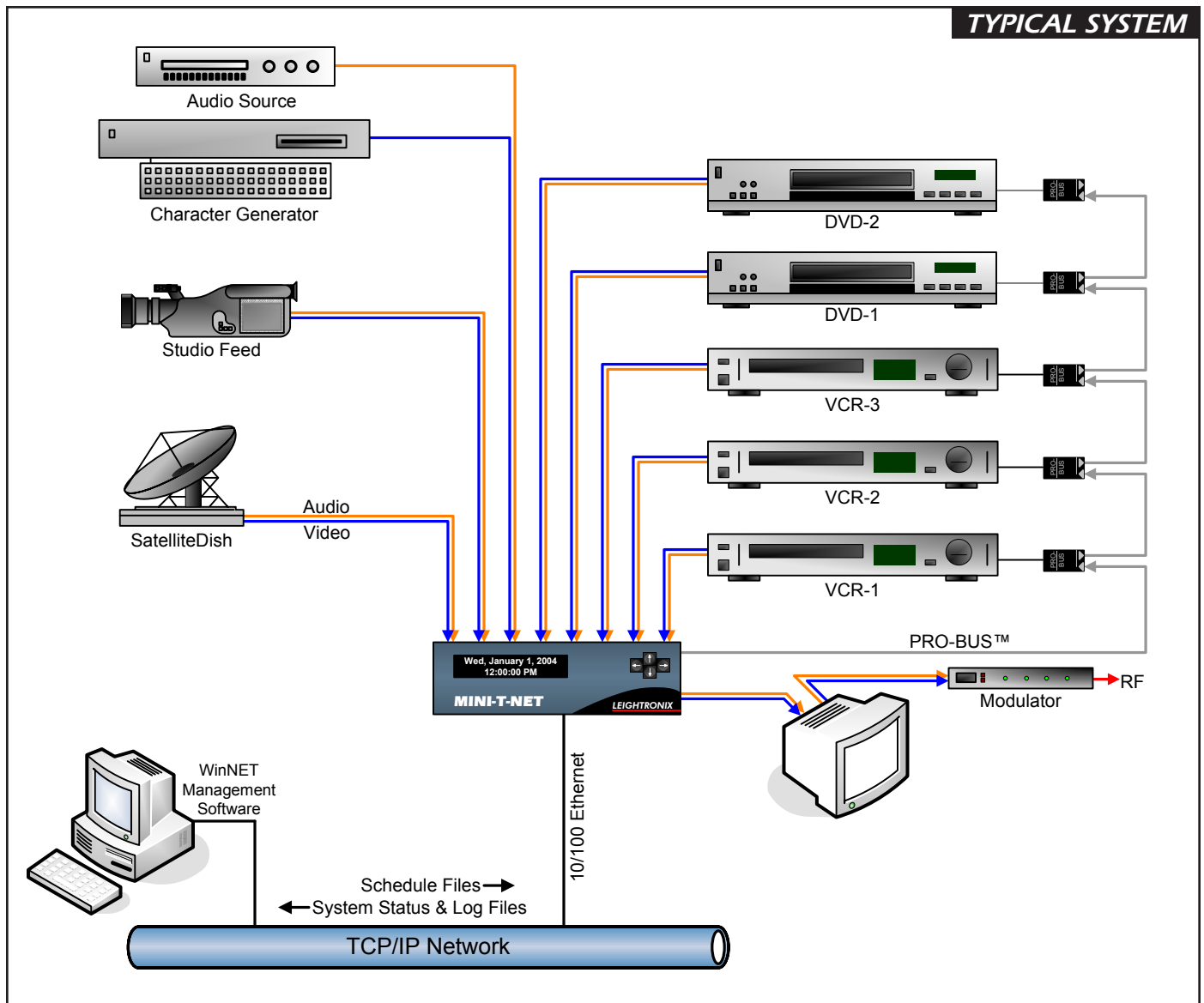
### Timed-Event Switching

- ❖ Syndex Switching
- ❖ Channel Wild-Card Switching
- ❖ Channel Sharing

### Unattended Program Recording

- ❖ Satellite/Network Recording
- ❖ Playback Verification/Archiving

## TYPICAL SYSTEM



info@leightronix.com ◆ www.leightronix.com ◆ (800) 243-5589

2330 Jarco Drive Holt, MI 48842 ◆ Phone (517) 694-8000 ◆ Fax (517) 694-1600